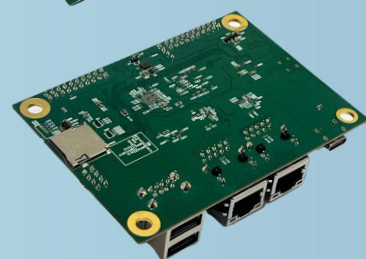
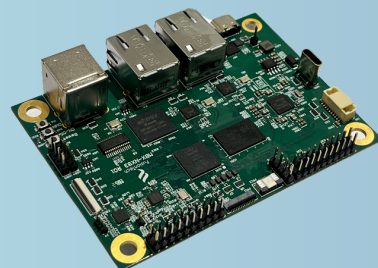
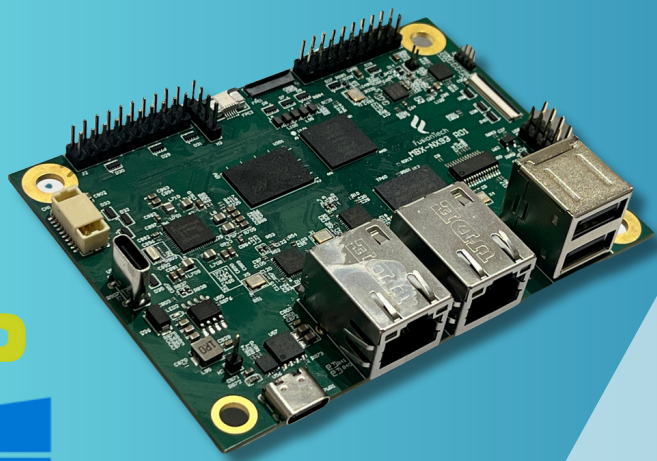


# MBX-NX93 2.5" Pico-ITX board with NXP i.MX 93

High-performance processing power coupled with low power consumption facilitates efficient and scalable applications



## Multiple Application Areas

### Features

- ARM Dual Core Cortex A55 processor up to 1.7GHz
- ARM Cortex®-M33 run up to 250 MHz for real-time and low-power processing.
- NPU for Machine learning capability to 0.5TOPS
- Form factor: 100x72mm, Pico-ITX
- Memory support: from 128 to 2GB
- Multi-Media support: 1x MIPI DSI w/1080p60, 1x LVDS w/720p60, 1x 1080P60 MIPI CSI for camera
- Power Supply via USB-C PD, 9V/12V/15V
- Multi-OS platform support: Windows/Linux with LVGL

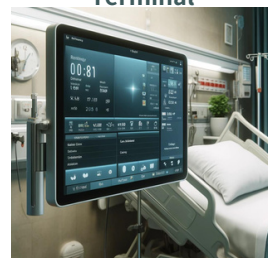
#### Automation



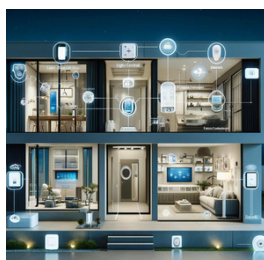
#### IoT Industry



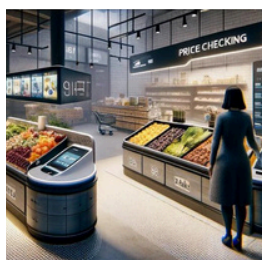
#### Medical Bedside Terminal



#### Smart Home



#### Intelligent Retail



#### Intelligent Agriculture



#### Access Control



#### HVAC Control



#### EV charging Station



## MBX-NX93

## 2.5" Pico-ITX board

### Specification

#### System

- ARM Dual Core Cortex A55 processor, up to 1.7GHz
- Memory support : LPDDR4, from 128~2GB
- Storage support 8/16/32GB eMMC

#### Display Support

- MIPI DSI w/1080p60
- LVDS w/720p60

#### Touch

- support USB/I2C Touch controller

#### Camera

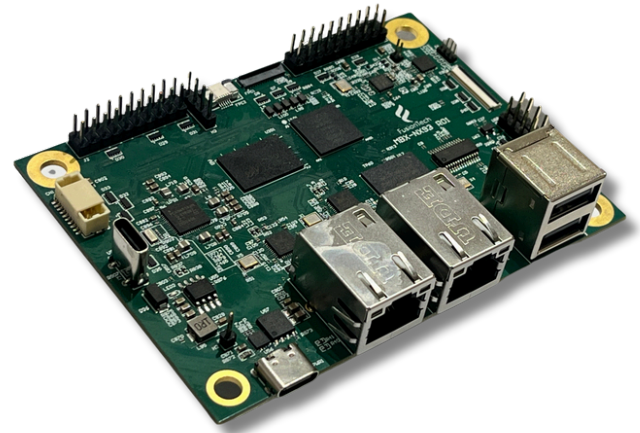
- 1x MIPI CSI, 1080P60

#### Ethernet

- 2x10/100/1000M Gigabit Ethernet

#### Connectivity I/O Interface

- 4x USB 2.0 HS, 1 x USB Type-C OTG
- 4x UART
- 6x GPIO (I2C/UART)
- Support RTC Battery via 1x PH 1.25mm
- 1x Expansion SD slot (on the rear side)



#### Size

- 100x72mm, Pico-ITX

#### Power Supply

- Power Supply via USB-C PD, 9V/12V/15V

#### Operating Temperature

- -10°C ~ 70°C

#### Operating System Support

Windows/Linux with LVGL

## Multiple powerful multimedia and deep learning frameworks support

