

# PK200-ES3 3.5 inch Open Frame Touch Panel Kit

High-performance processing power coupled with low power consumption facilitates efficient and scalable applications



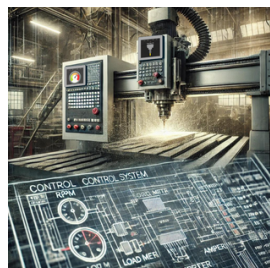
## Features

- The compact size 3.5 inch open frame Touch panel kit
- Powered by Xtensa® 32-bit L7, Dual - Core, low-power Microprocessor , up to 240MHz
- Consists with 8MB PSRAM and 16MB NOR Flash
- Built-in 802.11b/g/n Wi-Fi and Bluetooth 5.0 for connectivity
- Easy to affix on limited space for IoT application
- Support FreeRTOS, develops with LVGL Library for friendly UI/UX Design



## Multiple Application Areas

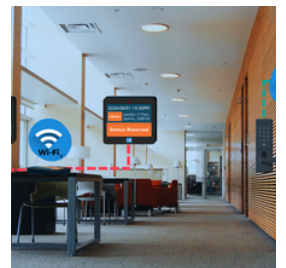
Smart Automation



IoT Industry



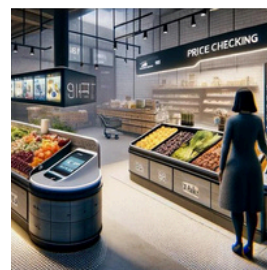
Space Management



Smart Home



Intelligent Retail



PIMS



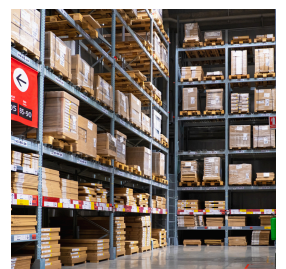
Self-Service Kiosk



Smart Locker

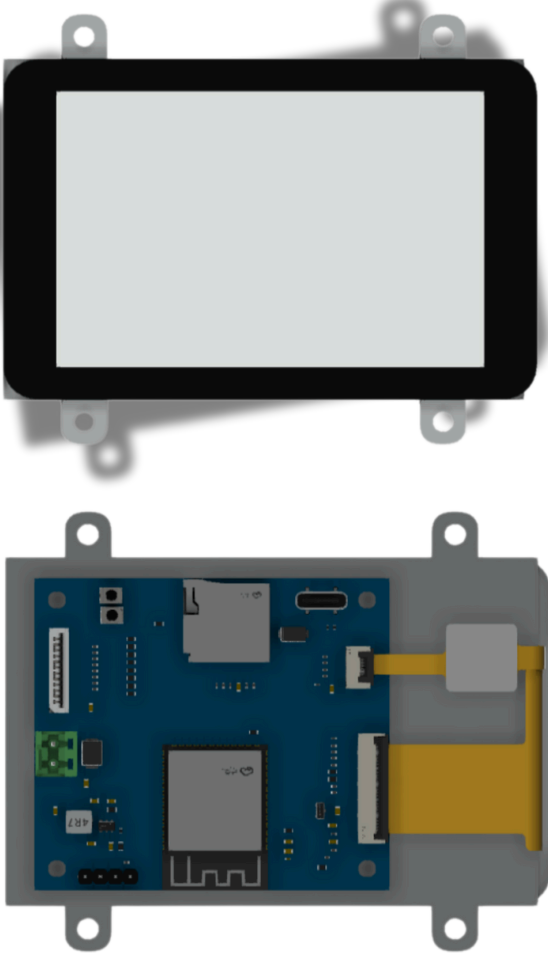


Electronic Shelves

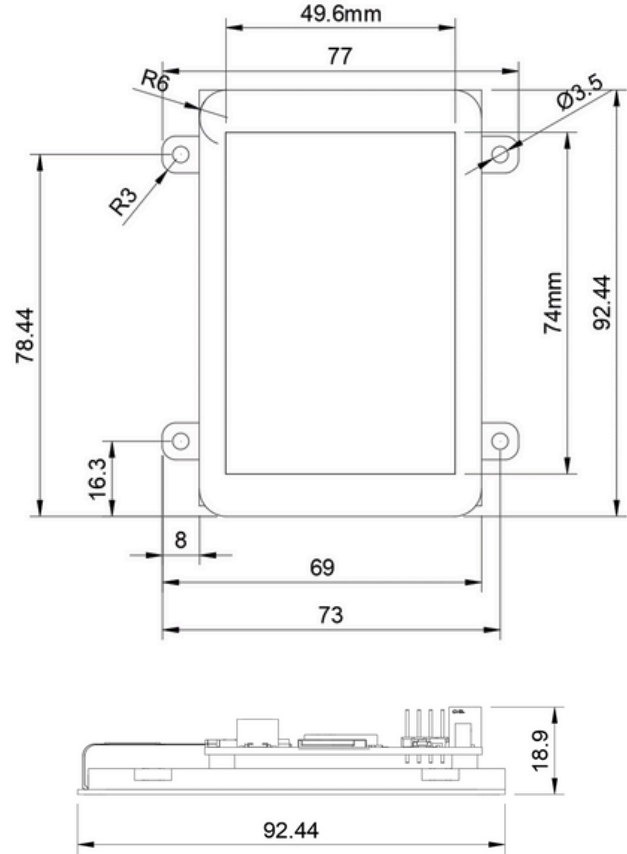


## PK200-ES3

## 3.5 inch Open Frame Panel kit



Dimension ( mm)



## Specification

### System

- Xtensa® 32-bit L7, Dual -Core, low-power Microprocessor , up to 240MHz
- Consists with 8MB PSRAM and 16MB NOR Flash

### Display

- 1x 3.5 inch Panel with Multiple Touch screen
- 320 x480 pixels with 300cd/m2 brightness

### Connectivity I/O Interface

- 1 x 12-Pin FFC Socket, supports 8x GPIO/I2C/UART/PWM and 5~12V Power In & Out
- RTC Battery support via PH 1.25mm
- 1x Micro SD slot
- 1x USB Type C for Debug
- 1x UART, 4-pin header

### Power Supply

- 5~12V Power Input via 1x 2P Terminal Block Phoenix Contact

### Operating Temperature

- 0°C ~ 50°C

### Mechanism

- 92.44 x 77mm ( w/ Frame);
- 60x 54.5mm (Board only)

### Operating System Support

- FreeRTOS, develops with LVGL Library for friendly UI design